

Legend:

- Order Limits
- Conservation Area
- Tree Preservation Order
- Veteran Tree Buffer Zone
- Root Protection Area

**Tree Stem Position**

- Category A tree (high quality)
- Category B tree (moderate quality)
- Category C tree (low quality)
- Category U tree (very low quality)

**Tree Canopy Spread**

- Category A tree (high quality)
- Category B tree (moderate quality)
- Category C tree (low quality)
- Category U tree (very low quality)

Please note that trees within the Sites have been plotted on a topographical survey. The positions of trees within the Cable Route Corridor have been estimated based on aerial imagery.

Data: Lanpro, 2025; IGP, 2025  
Base Maps: © Crown copyright and database rights 2025 Ordnance Survey 0100031673




APFP Regulation: 5(2)(a)  
Application Doc no.: EN010168/APP/6.2  
Drawing no.: P4443\_LPR\_ZZ\_XX\_DR\_Z\_ARB\_0248

Co-ordinate system: OSGB36 / British National Grid  
Scale: 1:7503 @ A3







Title:

Figure 10-1-02 Tree Constraints Plan

Document:

Volume 2  
Arboriculture  
Environmental Statement (ES)

Legend:

Order Limits

Root Protection Area

Tree Stem Position


Tree Canopy Spread

- Category A tree (high quality)
- Category B tree (moderate quality)
- Category C tree (low quality)
- Category U tree (very low quality)

Please note that trees within the Sites have been plotted on a topographical survey. The positions of trees within the Cable Route Corridor have been estimated based on aerial imagery.

Data: Lanpro, 2025; IGP, 2025

Base Maps: © Crown copyright and database rights 2025 Ordnance Survey 0100031673



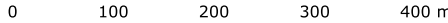
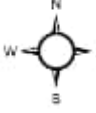
APFP Regulation: 5(2)(a)



Application Doc no.: EN010168/APP/6.2

Drawing no.: P4443\_LPR\_ZZ\_XX\_DR\_Z\_ARB\_0248

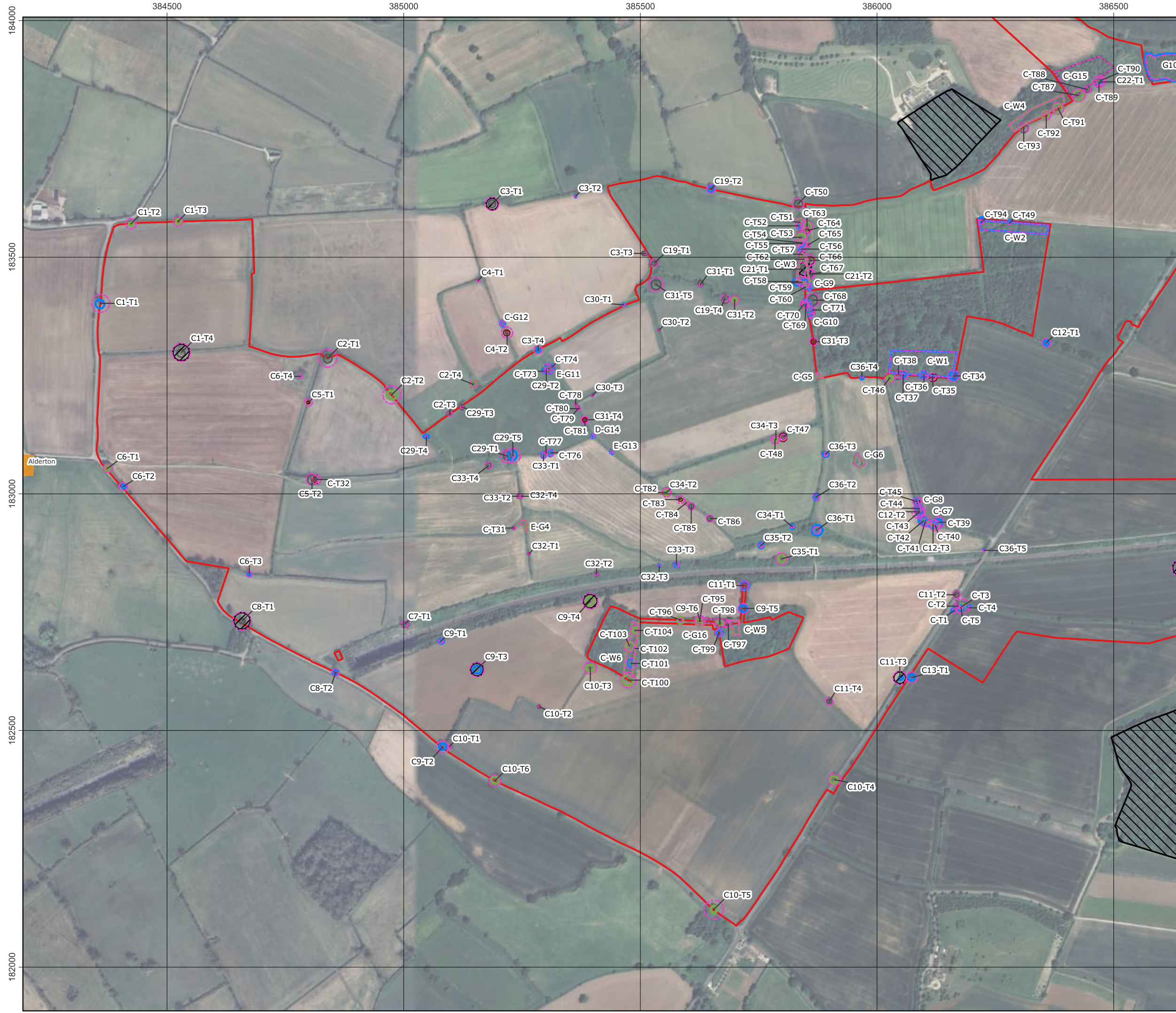
Co-ordinate system: OSGB36 / British National Grid

Scale: 1:7503 @ A3









- Legend:
- Order Limits
  - Conservation Area
  - Ancient Woodland
  - Veteran Tree Buffer Zone
  - Root Protection Area
- Tree Stem Position**
- Category A tree (high quality)
  - Category B tree (moderate quality)
  - Category C tree (low quality)
  - Category U tree (very low quality)
- Tree Canopy Spread**
- Category A tree (high quality)
  - Category B tree (moderate quality)
  - Category C tree (low quality)
  - Category U tree (very low quality)

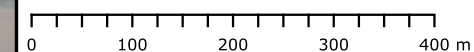
Please note that trees within the Sites have been plotted on a topographical survey. The positions of trees within the Cable Route Corridor have been estimated based on aerial imagery.

Data: Lanpro, 2025; IGP, 2025  
Base Maps: © Crown copyright and database rights 2025 Ordnance Survey 0100031673



APFP Regulation: 5(2)(a)  
Application Doc no.: EN010168/APP/6.2  
Drawing no.: P4443\_LPR\_ZZ\_XX\_DR\_Z\_ARB\_0248

Co-ordinate system: OSGB36 / British National Grid  
Scale: 1:7503 @ A3











Title:  
Figure 10-1-05 Tree Constraints Plan

Document:  
Volume 2  
Arboriculture  
Environmental Statement (ES)

- Legend:
- Order Limits
  - Tree Preservation Order
  - Ancient Woodland
  - Veteran Tree Buffer Zone
  - Root Protection Area
- Tree Stem Position**
- Category A tree (high quality)
  - Category B tree (moderate quality)
  - Category C tree (low quality)
  - Category U tree (very low quality)
- Tree Canopy Spread**
- Category A tree (high quality)
  - Category B tree (moderate quality)
  - Category C tree (low quality)
  - Category U tree (very low quality)

Please note that trees within the Sites have been plotted on a topographical survey. The positions of trees within the Cable Route Corridor have been estimated based on aerial imagery.

Data: Lanpro, 2025; IGP, 2025  
Base Maps: © Crown copyright and database rights 2025 Ordnance Survey 0100031673



APFP Regulation: 5(2)(a)  
Application Doc no.: EN010168/APP/6.2  
Drawing no.: P4443\_LPR\_ZZ\_XX\_DR\_Z\_ARB\_0248

Co-ordinate system: OSGB36 / British National Grid  
Scale: 1:7503 @ A3















Title:  
Figure 10-1-08 Tree Constraints Plan

Document:  
Volume 2  
Arboriculture  
Environmental Statement (ES)

- Legend:
- Order Limits
  - Ancient Woodland
  - Root Protection Area
  - Tree Stem Position**
    - Category A tree (high quality)
    - Category B tree (moderate quality)
    - Category C tree (low quality)
  - Tree Canopy Spread**
    - Category A tree (high quality)
    - Category B tree (moderate quality)
    - Category C tree (low quality)

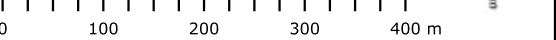
Please note that trees within the Sites have been plotted on a topographical survey. The positions of trees within the Cable Route Corridor have been estimated based on aerial imagery.

**Data:** Lanpro, 2025; IGP, 2025  
**Base Maps:** © Crown copyright and database rights 2025 Ordnance Survey 0100031673

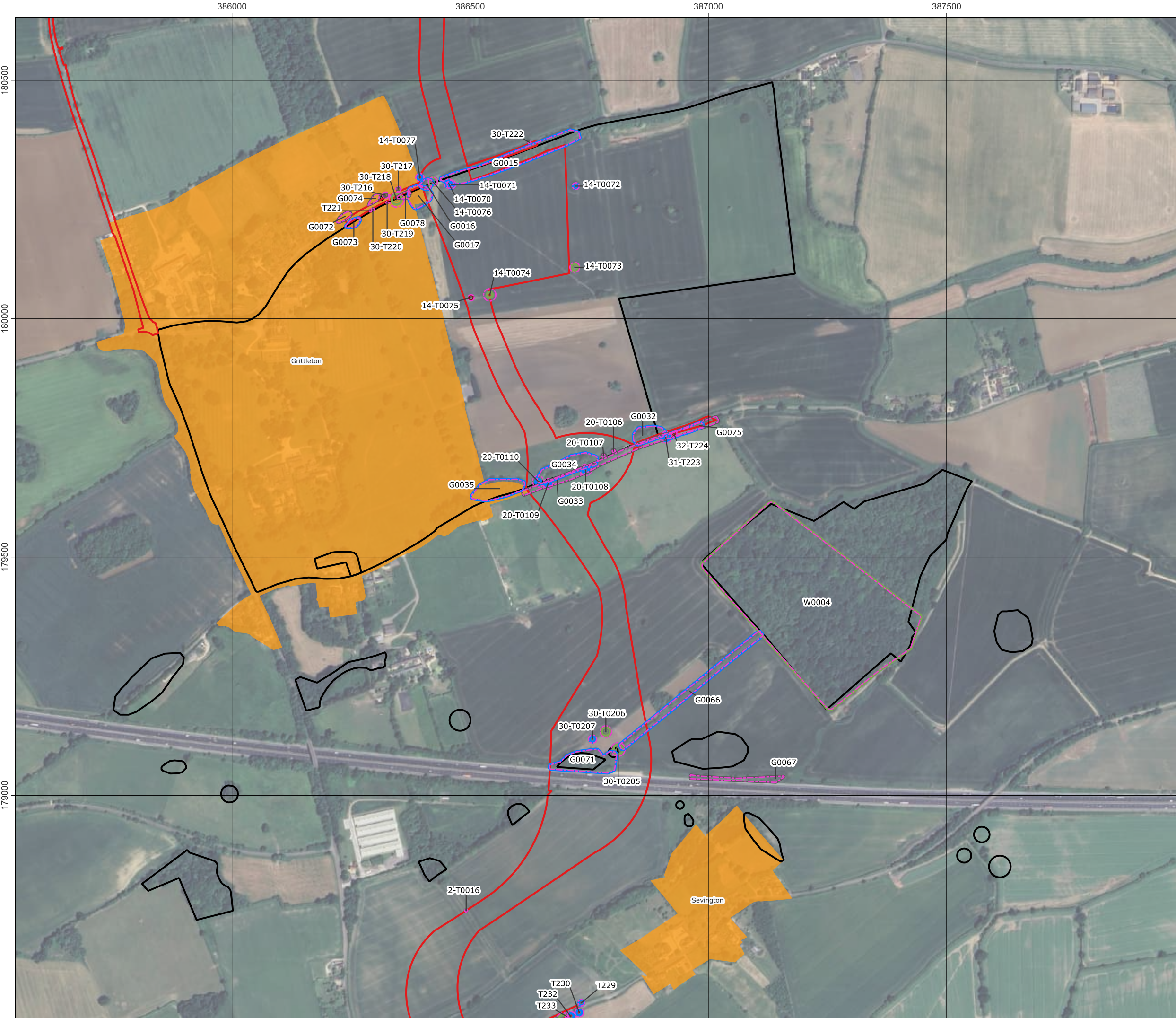


APFP Regulation: 5(2)(a)  
Application Doc no.: EN010168/APP/6.2  
Drawing no.: P4443\_LPR\_ZZ\_XX\_DR\_Z\_ARB\_0248

Co-ordinate system: OSGB36 / British National Grid  
Scale: 1:7503 @ A3







Title:  
Figure 10-1-09 Tree Constraints Plan

Document:  
Volume 2  
Arboriculture  
Environmental Statement (ES)

- Legend:
- Order Limits
  - Conservation Area
  - Tree Preservation Order
  - Root Protection Area
  - Tree Stem Position**
    - Category A tree (high quality)
    - Category B tree (moderate quality)
    - Category C tree (low quality)
    - Category U tree (very low quality)
  - Tree Canopy Spread**
    - Category A tree (high quality)
    - Category B tree (moderate quality)
    - Category C tree (low quality)
    - Category U tree (very low quality)

Please note that trees within the Sites have been plotted on a topographical survey. The positions of trees within the Cable Route Corridor have been estimated based on aerial imagery.

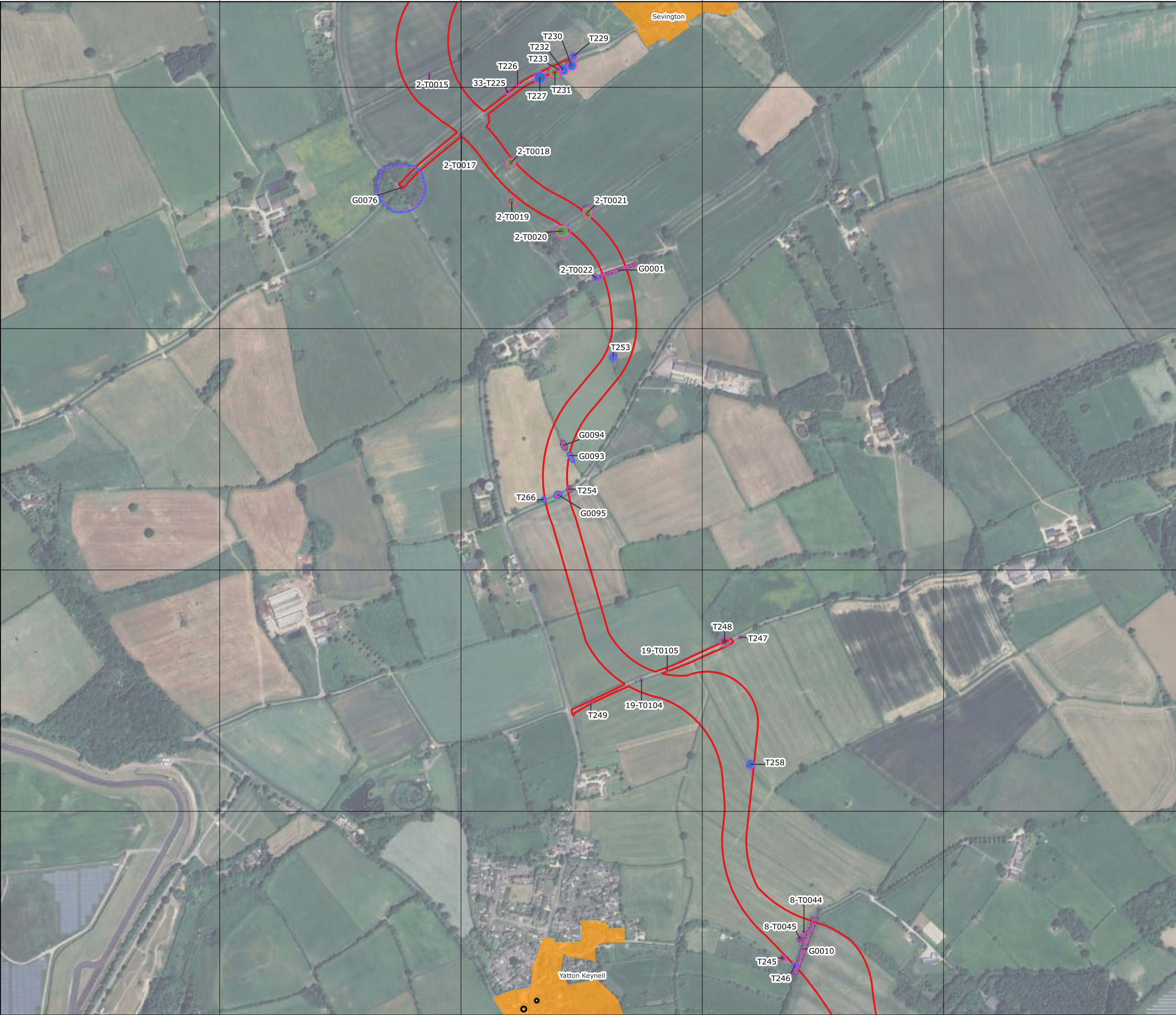
Data: Lanpro, 2025; IGP, 2025  
Base Maps: © Crown copyright and database rights 2025 Ordnance Survey 0100031673



APFP Regulation: 5(2)(a)  
Application Doc no.: EN010168/APP/6.2  
Drawing no.: P4443\_LPR\_ZZ\_XX\_DR\_Z\_ARB\_0248

Co-ordinate system: OSGB36 / British National Grid  
Scale: 1:7503 @ A3





Title:  
Figure 10-1-10 Tree Constraints Plan

Document:  
Volume 2  
Arboriculture  
Environmental Statement (ES)

- Legend:
- Order Limits
  - Conservation Area
  - Tree Preservation Order
  - Root Protection Area
  - Tree Stem Position**
    - Category A tree (high quality)
    - Category B tree (moderate quality)
    - Category C tree (low quality)
    - Category U tree (very low quality)
  - Tree Canopy Spread**
    - Category A tree (high quality)
    - Category B tree (moderate quality)
    - Category C tree (low quality)
    - Category U tree (very low quality)

Please note that trees within the Sites have been plotted on a topographical survey. The positions of trees within the Cable Route Corridor have been estimated based on aerial imagery.

Data: Lanpro, 2025; IGP, 2025  
Base Maps: © Crown copyright and database rights 2025 Ordnance Survey 0100031673

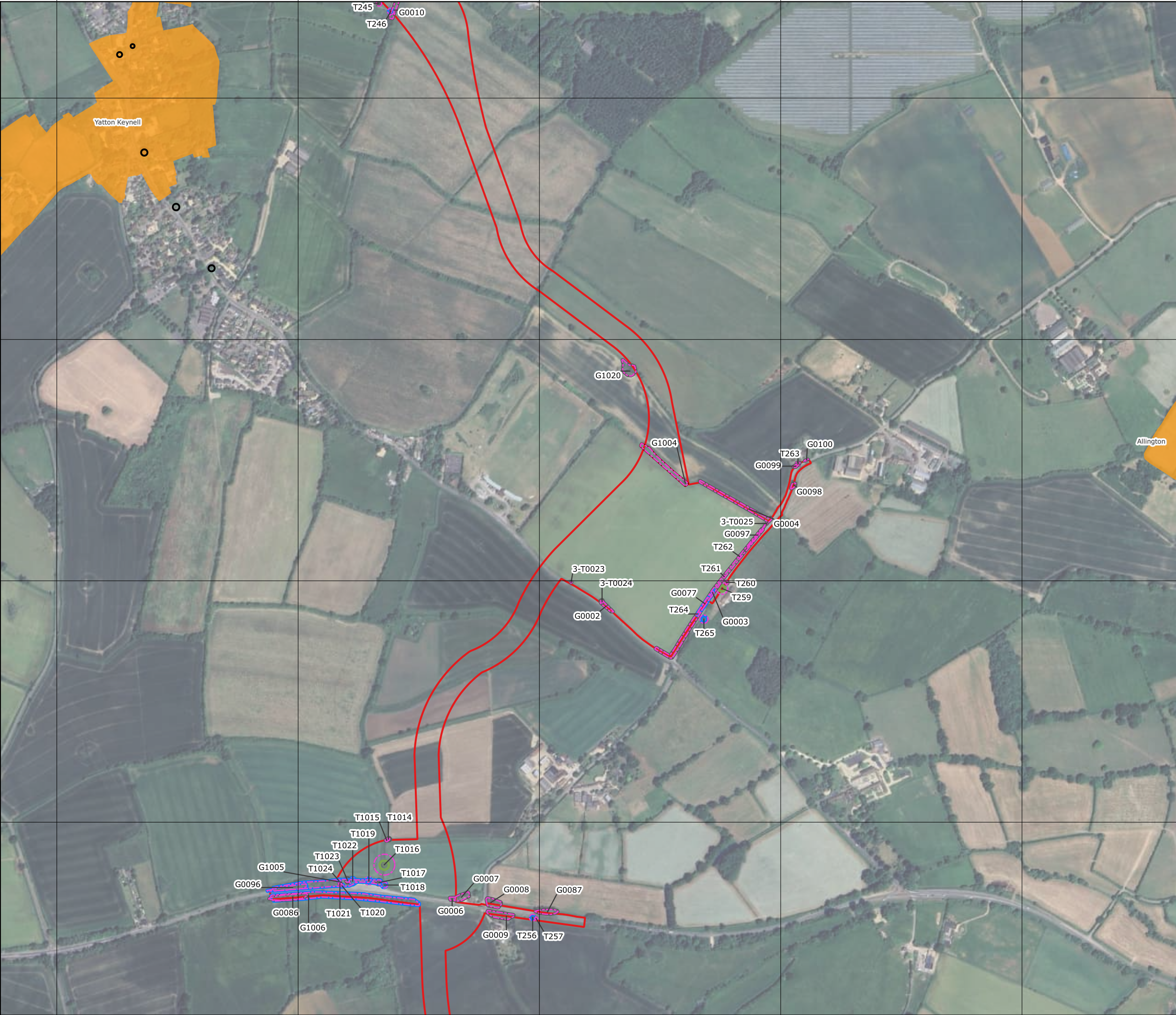


APFP Regulation: 5(2)(a)  
Application Doc no.: EN010168/APP/6.2  
Drawing no.: P4443\_LPR\_ZZ\_XX\_DR\_Z\_ARB\_0248

Co-ordinate system: OSGB36 / British National Grid  
Scale: 1:7503 @ A3







Title:  
Figure 10-1-11 Tree Constraints Plan

Document:  
Volume 2  
Arboriculture  
Environmental Statement (ES)

- Legend:
- Order Limits
  - Conservation Area
  - Tree Preservation Order
  - Root Protection Area
  - Tree Stem Position**
    - Category A tree (high quality)
    - Category B tree (moderate quality)
    - Category C tree (low quality)
    - Category U tree (very low quality)
  - Tree Canopy Spread**
    - Category A tree (high quality)
    - Category B tree (moderate quality)
    - Category C tree (low quality)
    - Category U tree (very low quality)

Please note that trees within the Sites have been plotted on a topographical survey. The positions of trees within the Cable Route Corridor have been estimated based on aerial imagery.

Data: Lanpro, 2025; IGP, 2025  
Base Maps: © Crown copyright and database rights 2025 Ordnance Survey 0100031673

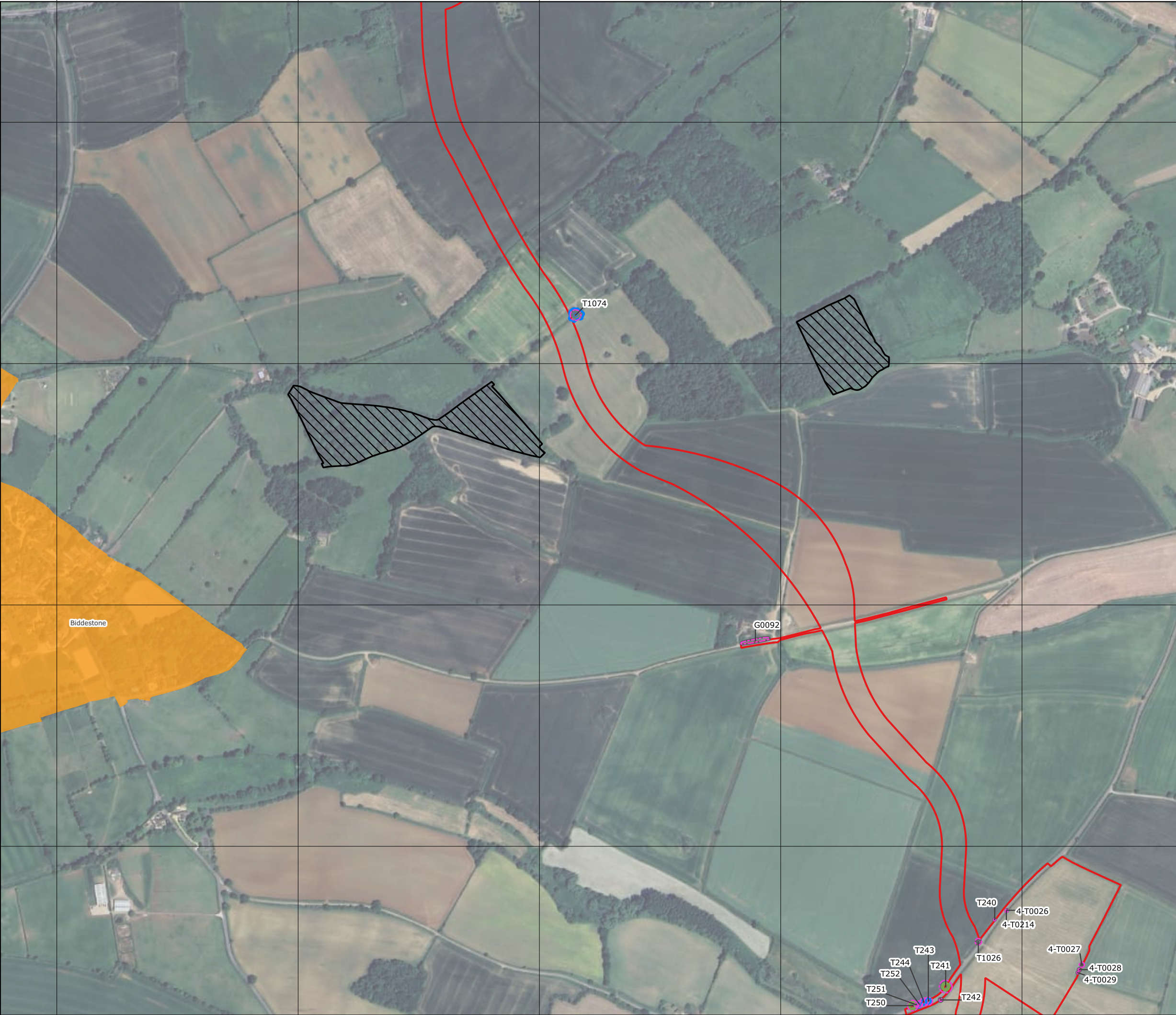


APFP Regulation: 5(2)(a)  
Application Doc no.: EN010168/APP/6.2  
Drawing no.: P4443\_LPR\_ZZ\_XX\_DR\_Z\_ARB\_0248

Co-ordinate system: OSGB36 / British National Grid  
Scale: 1:7503 @ A3







Title:  
Figure 10-1-12 Tree Constraints Plan

Document:  
Volume 2  
Arboriculture  
Environmental Statement (ES)

- Legend:
- Order Limits
  - Conservation Area
  - Ancient Woodland
  - Root Protection Area
  - Tree Stem Position**
    - Category A tree (high quality)
    - Category B tree (moderate quality)
    - Category C tree (low quality)
  - Tree Canopy Spread**
    - Category A tree (high quality)
    - Category B tree (moderate quality)
    - Category C tree (low quality)

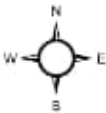
Please note that trees within the Sites have been plotted on a topographical survey. The positions of trees within the Cable Route Corridor have been estimated based on aerial imagery.

Data: Lanpro, 2025; IGP, 2025  
Base Maps: © Crown copyright and database rights 2025 Ordnance Survey 0100031673

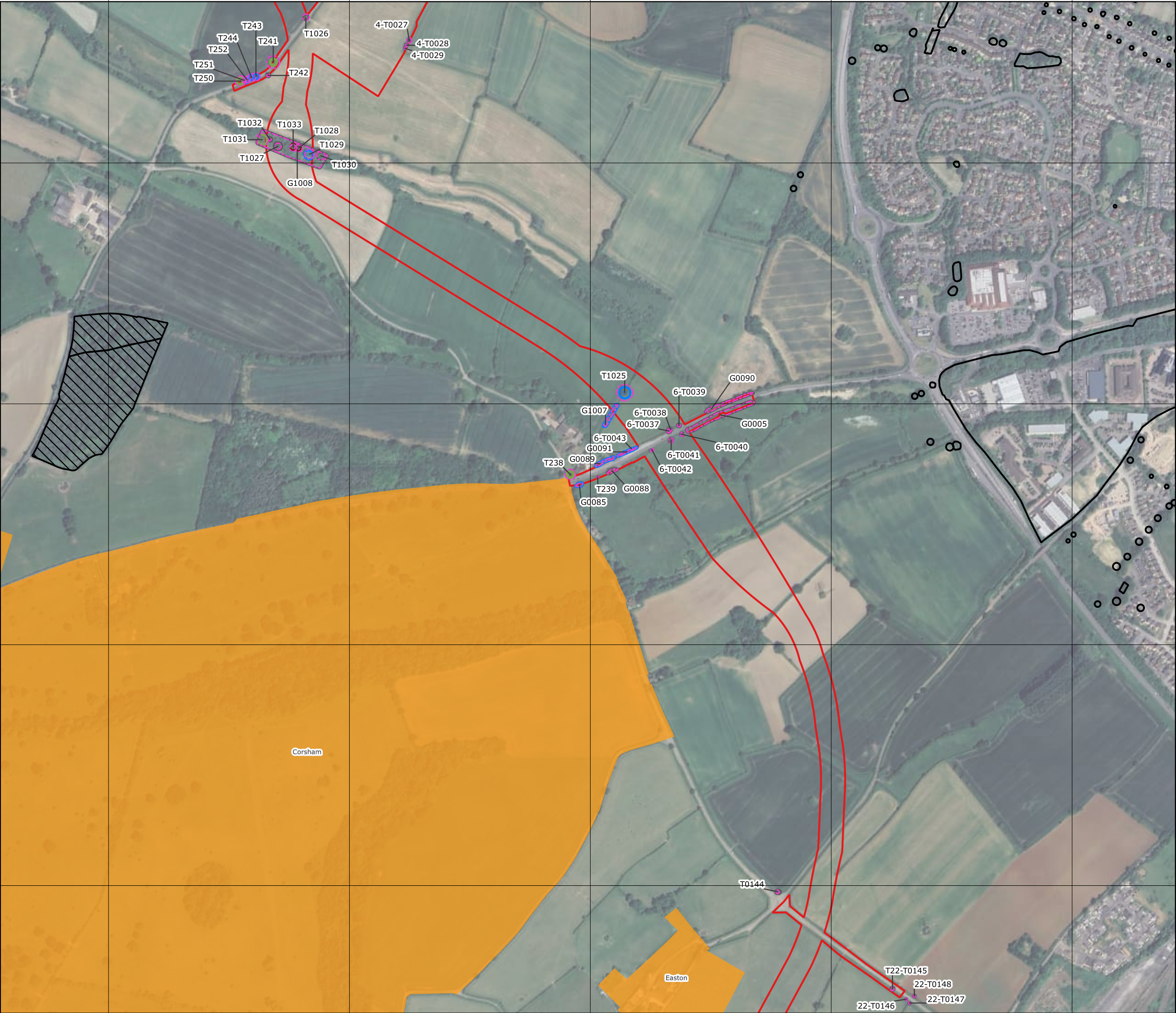


APFP Regulation: 5(2)(a)  
Application Doc no.: EN010168/APP/6.2  
Drawing no.: P4443\_LPR\_ZZ\_XX\_DR\_Z\_ARB\_0248

Co-ordinate system: OSGB36 / British National Grid  
Scale: 1:7503 @ A3







Legend:

- Order Limits
- Conservation Area
- Tree Preservation Order
- Ancient Woodland
- Root Protection Area

**Tree Stem Position**

- Category A tree (high quality)
- Category B tree (moderate quality)
- Category C tree (low quality)
- Category U tree (very low quality)

**Tree Canopy Spread**

- Category A tree (high quality)
- Category B tree (moderate quality)
- Category C tree (low quality)
- Category U tree (very low quality)

Please note that trees within the Sites have been plotted on a topographical survey. The positions of trees within the Cable Route Corridor have been estimated based on aerial imagery.

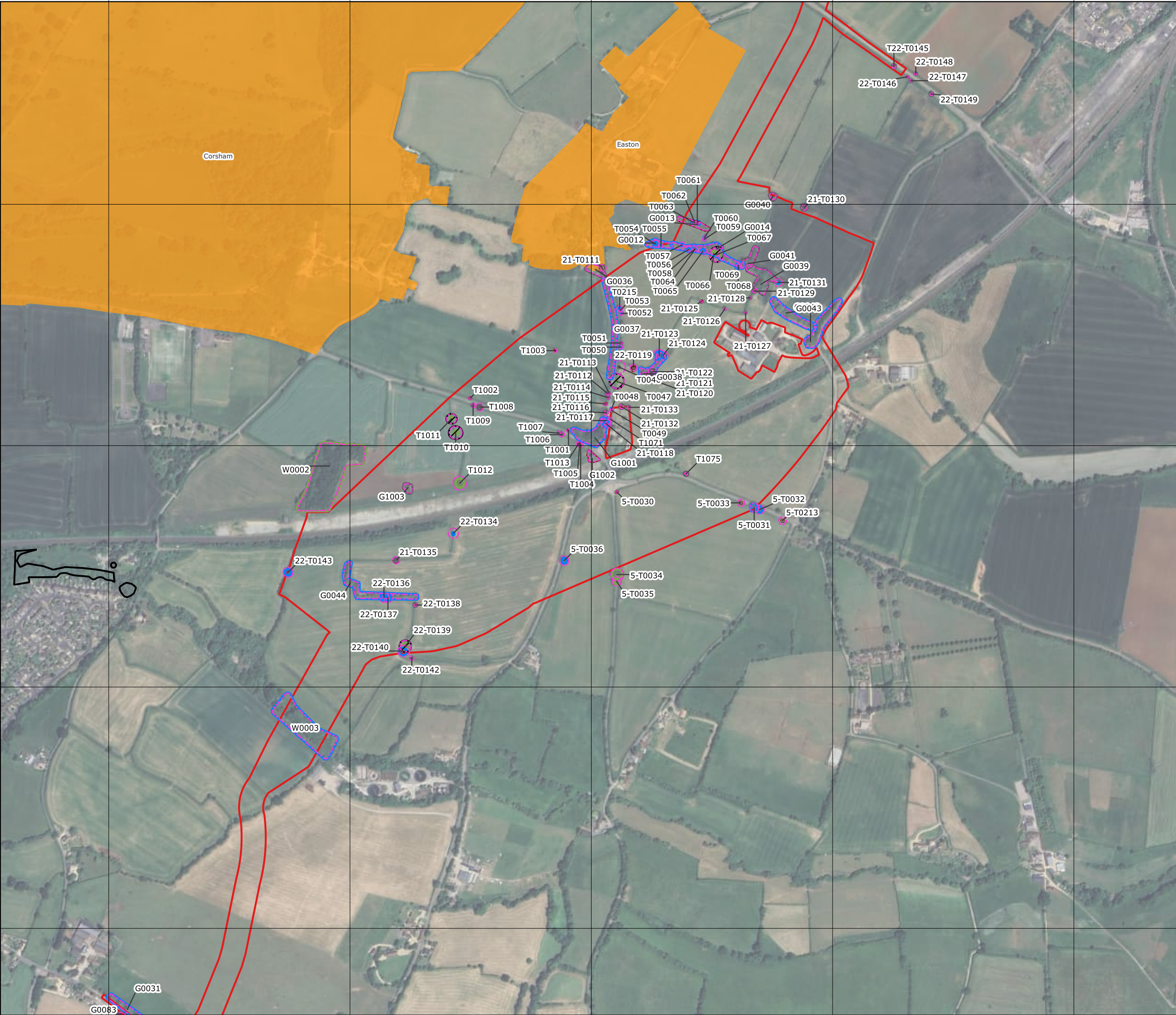
Data: Lanpro, 2025; IGP, 2025  
Base Maps: © Crown copyright and database rights 2025 Ordnance Survey 0100031673



APFP Regulation: 5(2)(a)  
Application Doc no.: EN010168/APP/6.2  
Drawing no.: P4443\_LPR\_ZZ\_XX\_DR\_Z\_ARB\_0248

Co-ordinate system: OSGB36 / British National Grid  
Scale: 1:7503 @ A3





Title:  
Figure 10-1-14 Tree Constraints Plan

Document:  
Volume 2  
Arboriculture  
Environmental Statement (ES)

- Legend:
- Order Limits
  - Conservation Area
  - Tree Preservation Order
  - Veteran Tree Buffer Zone
  - Root Protection Area
- Tree Stem Position**
- Category A tree (high quality)
  - Category B tree (moderate quality)
  - Category C tree (low quality)
  - Category U tree (very low quality)
- Tree Canopy Spread**
- Category A tree (high quality)
  - Category B tree (moderate quality)
  - Category C tree (low quality)
  - Category U tree (very low quality)

Please note that trees within the Sites have been plotted on a topographical survey. The positions of trees within the Cable Route Corridor have been estimated based on aerial imagery.

Data: Lanpro, 2025; IGP, 2025  
Base Maps: © Crown copyright and database rights 2025 Ordnance Survey 0100031673



APFP Regulation: 5(2)(a)  
Application Doc no.: EN010168/APP/6.2  
Drawing no.: P4443\_LPR\_ZZ\_XX\_DR\_Z\_ARB\_0248

Co-ordinate system: OSGB36 / British National Grid  
Scale: 1:7503 @ A3







Title:  
Figure 10-1-15 Tree Constraints Plan

Document:  
Volume 2  
Arboriculture  
Environmental Statement (ES)

- Legend:
- Order Limits
  - Conservation Area
  - Tree Preservation Order
  - Root Protection Area
  - Tree Stem Position**
    - Category A tree (high quality)
    - Category B tree (moderate quality)
    - Category C tree (low quality)
    - Category U tree (very low quality)
  - Tree Canopy Spread**
    - Category A tree (high quality)
    - Category B tree (moderate quality)
    - Category C tree (low quality)
    - Category U tree (very low quality)

Please note that trees within the Sites have been plotted on a topographical survey. The positions of trees within the Cable Route Corridor have been estimated based on aerial imagery.

Data: Lanpro, 2025; IGP, 2025  
Base Maps: © Crown copyright and database rights 2025 Ordnance Survey 0100031673

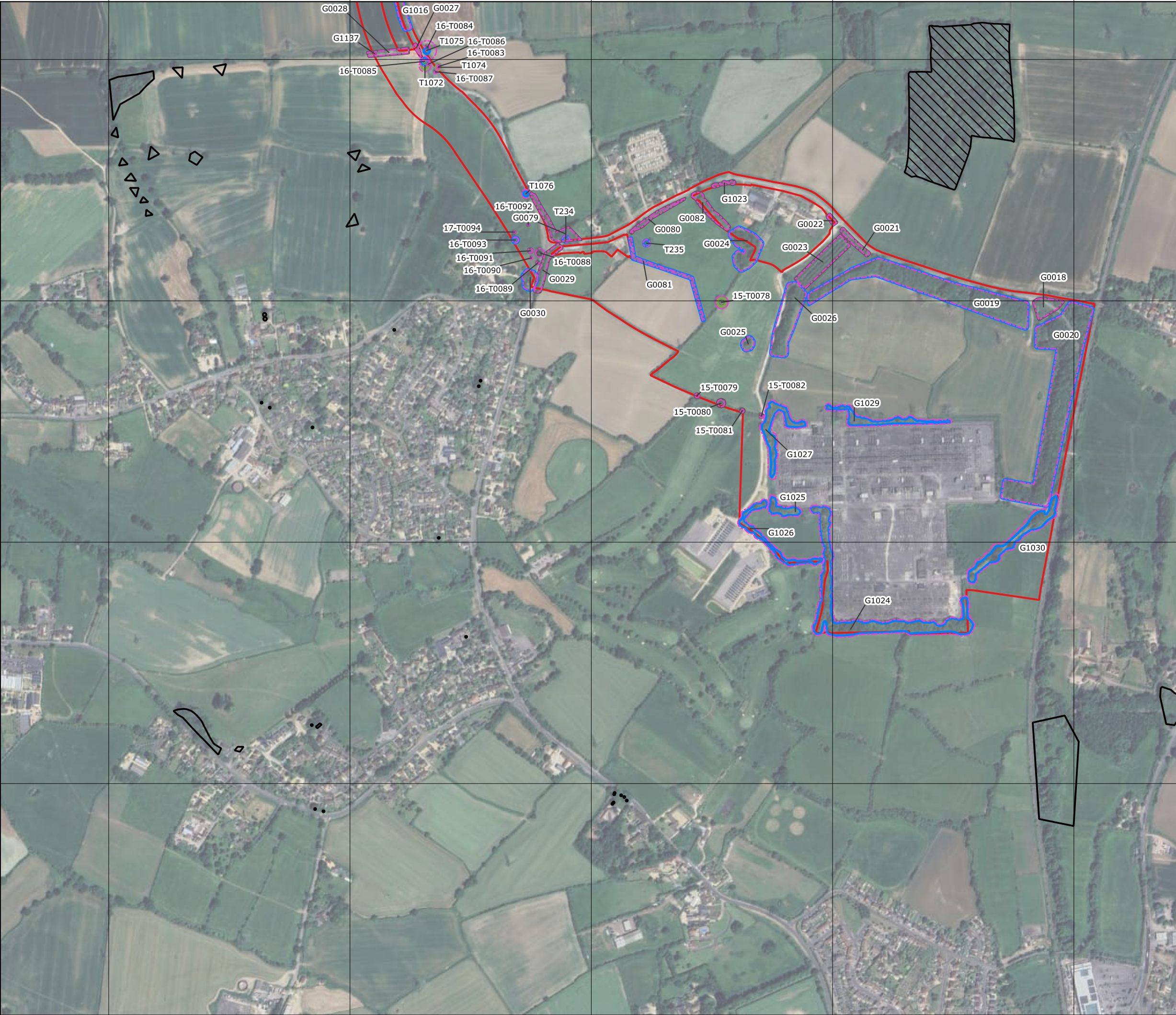


APFP Regulation: 5(2)(a)  
Application Doc no.: EN010168/APP/6.2  
Drawing no.: P4443\_LPR\_ZZ\_XX\_DR\_Z\_ARB\_0248

Co-ordinate system: OSGB36 / British National Grid  
Scale: 1:7503 @ A3







Title:  
Figure 10-1-16 Tree Constraints Plan

Document:  
Volume 2  
Arboriculture  
Environmental Statement (ES)

- Legend:
- Order Limits
  - Tree Preservation Order
  - Ancient Woodland
  - Root Protection Area
- Tree Stem Position**
- Category A tree (high quality)
  - Category B tree (moderate quality)
  - Category C tree (low quality)
- Tree Canopy Spread**
- Category A tree (high quality)
  - Category B tree (moderate quality)
  - Category C tree (low quality)

Please note that trees within the Sites have been plotted on a topographical survey. The positions of trees within the Cable Route Corridor have been estimated based on aerial imagery.

**Data:** Lanpro, 2025; IGP, 2025  
**Base Maps:** © Crown copyright and database rights 2025 Ordnance Survey 0100031673

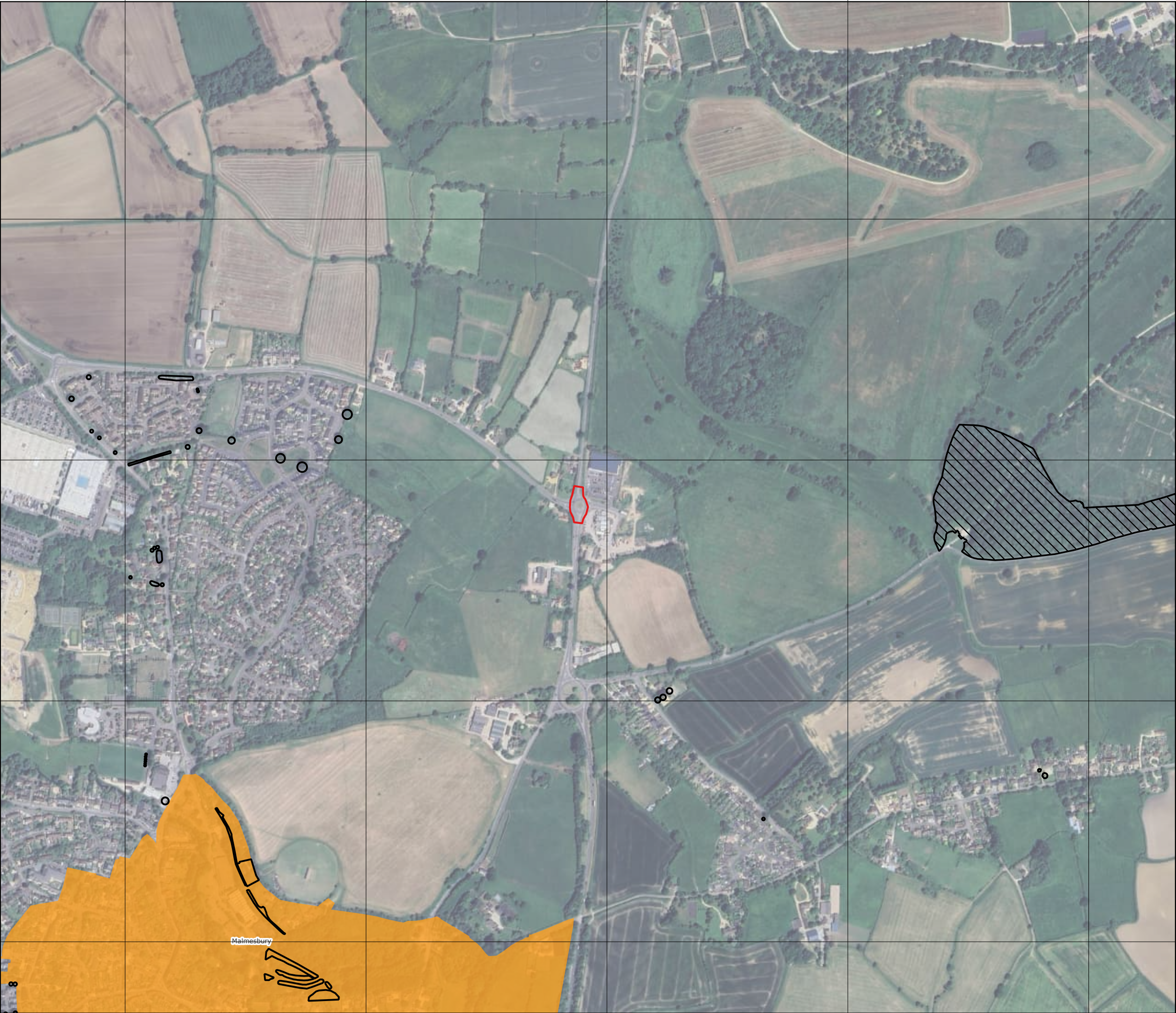


APFP Regulation: 5(2)(a)  
Application Doc no.: EN010168/APP/6.2  
Drawing no.: P4443\_LPR\_ZZ\_XX\_DR\_Z\_ARB\_0248

Co-ordinate system: OSGB36 / British National Grid  
Scale: 1:7503 @ A3







Title:  
Figure 10-1-17 Tree Constraints Plan

Document:  
Volume 2  
Arboriculture  
Environmental Statement (ES)

- Legend:
- Order Limits
  - Conservation Area
  - Tree Preservation Order
  - Ancient Woodland

Please note that trees within the Sites have been plotted on a topographical survey. The positions of trees within the Cable Route Corridor have been estimated based on aerial imagery.

**Data:** Lanpro, 2025; IGP, 2025  
**Base Maps:** © Crown copyright and database rights 2025 Ordnance Survey 0100031673

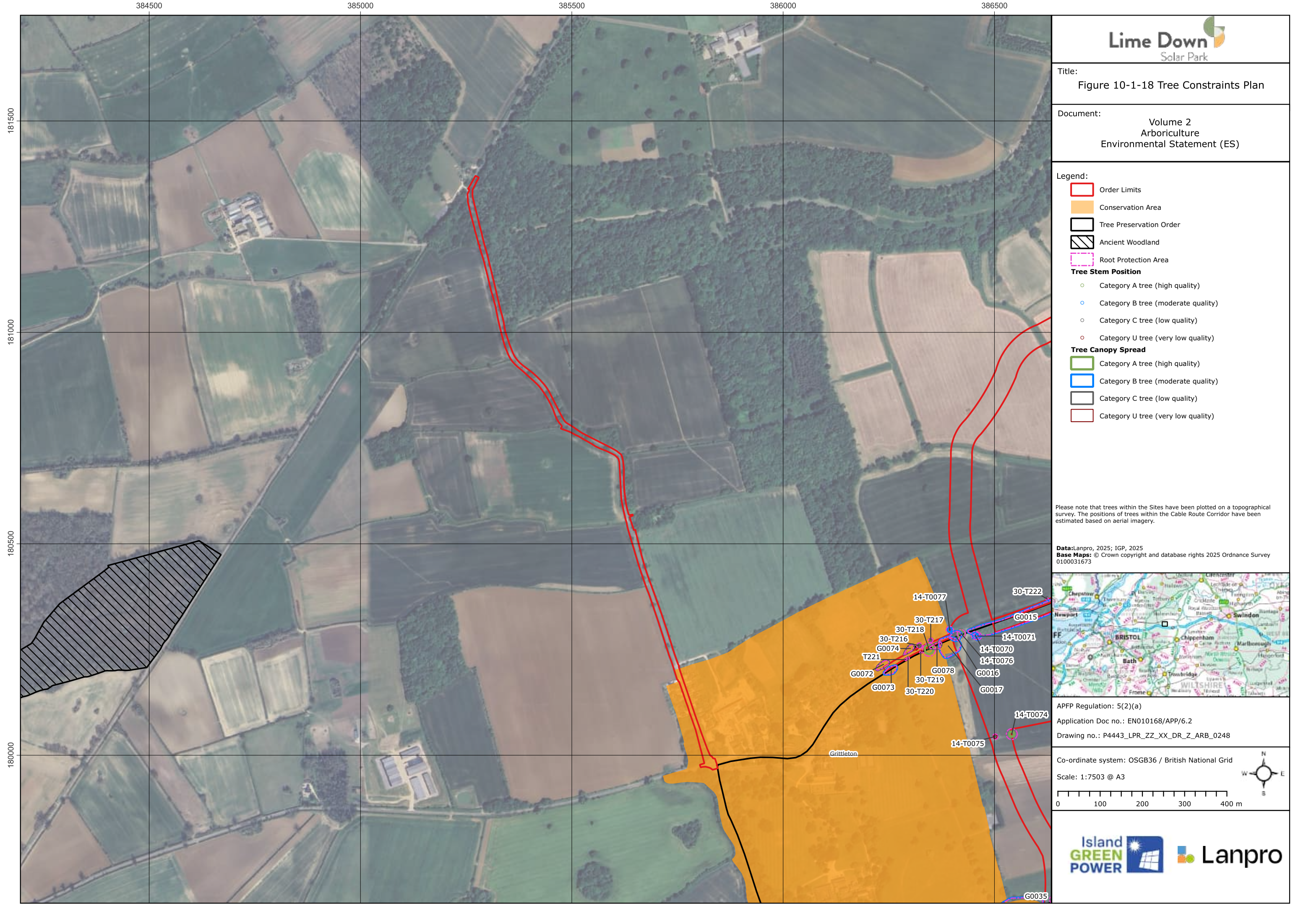


APFP Regulation: 5(2)(a)  
Application Doc no.: EN010168/APP/6.2  
Drawing no.: P4443\_LPR\_ZZ\_XX\_DR\_Z\_ARB\_0248

Co-ordinate system: OSGB36 / British National Grid  
Scale: 1:7503 @ A3











Title:  
Figure 10-1-19 Tree Constraints Plan

Document:  
Volume 2  
Arboriculture  
Environmental Statement (ES)

- Legend:
- Order Limits
  - Conservation Area
  - Tree Preservation Order
  - Ancient Woodland

Please note that trees within the Sites have been plotted on a topographical survey. The positions of trees within the Cable Route Corridor have been estimated based on aerial imagery.

**Data:** Lanpro, 2025; IGP, 2025  
**Base Maps:** © Crown copyright and database rights 2025 Ordnance Survey 0100031673



APFP Regulation: 5(2)(a)  
Application Doc no.: EN010168/APP/6.2  
Drawing no.: P4443\_LPR\_ZZ\_XX\_DR\_Z\_ARB\_0248

Co-ordinate system: OSGB36 / British National Grid  
Scale: 1:7503 @ A3





375500

376000

376500

377000

377500

182000

181500

181000

180500



Title:  
Figure 10-1-20 Tree Constraints Plan

Document:  
Volume 2  
Arboriculture  
Environmental Statement (ES)

- Legend:
- Order Limits
  - Ancient Woodland

Please note that trees within the Sites have been plotted on a topographical survey. The positions of trees within the Cable Route Corridor have been estimated based on aerial imagery.

**Data:**Lanpro, 2025; IGP, 2025  
**Base Maps:** © Crown copyright and database rights 2025 Ordnance Survey 0100031673



APFP Regulation: 5(2)(a)  
Application Doc no.: EN010168/APP/6.2  
Drawing no.: P4443\_LPR\_ZZ\_XX\_DR\_Z\_ARB\_0248

Co-ordinate system: OSGB36 / British National Grid  
Scale: 1:7503 @ A3







Title:  
Figure 10-1-21 Tree Constraints Plan

Document:  
Volume 2  
Arboriculture  
Environmental Statement (ES)

- Legend:
- Order Limits
  - Conservation Area
  - Ancient Woodland

Please note that trees within the Sites have been plotted on a topographical survey. The positions of trees within the Cable Route Corridor have been estimated based on aerial imagery.

Data: Lanpro, 2025; IGP, 2025  
Base Maps: © Crown copyright and database rights 2025 Ordnance Survey 0100031673



APFP Regulation: 5(2)(a)  
Application Doc no.: EN010168/APP/6.2  
Drawing no.: P4443\_LPR\_ZZ\_XX\_DR\_Z\_ARB\_0248

Co-ordinate system: OSGB36 / British National Grid  
Scale: 1:7503 @ A3







Title:  
Figure 10-1-22 Tree Constraints Plan

Document:  
Volume 2  
Arboriculture  
Environmental Statement (ES)

- Legend:
- Order Limits
  - Conservation Area
  - Tree Preservation Order
  - Ancient Woodland

Please note that trees within the Sites have been plotted on a topographical survey. The positions of trees within the Cable Route Corridor have been estimated based on aerial imagery.

Data: Lanpro, 2025; IGP, 2025  
Base Maps: © Crown copyright and database rights 2025 Ordnance Survey 0100031673

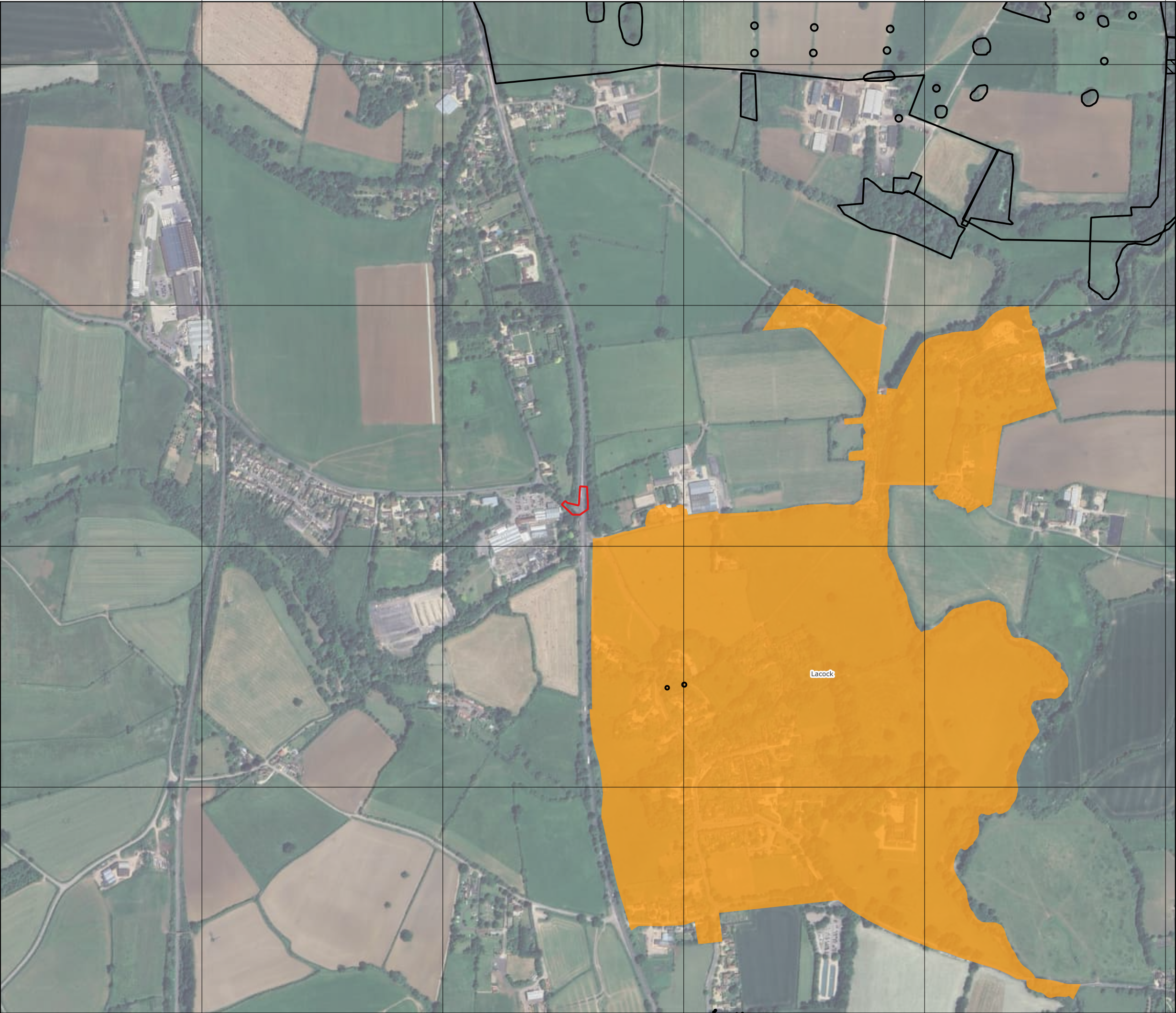


APFP Regulation: 5(2)(a)  
Application Doc no.: EN010168/APP/6.2  
Drawing no.: P4443\_LPR\_ZZ\_XX\_DR\_Z\_ARB\_0248

Co-ordinate system: OSGB36 / British National Grid  
Scale: 1:7503 @ A3







Title:  
Figure 10-1-23 Tree Constraints Plan

Document:  
Volume 2  
Arboriculture  
Environmental Statement (ES)

- Legend:
- Order Limits
  - Conservation Area
  - Tree Preservation Order
  - Ancient Woodland

Please note that trees within the Sites have been plotted on a topographical survey. The positions of trees within the Cable Route Corridor have been estimated based on aerial imagery.

Data: Lanpro, 2025; IGP, 2025  
Base Maps: © Crown copyright and database rights 2025 Ordnance Survey 0100031673



APFP Regulation: 5(2)(a)  
Application Doc no.: EN010168/APP/6.2  
Drawing no.: P4443\_LPR\_ZZ\_XX\_DR\_Z\_ARB\_0248

Co-ordinate system: OSGB36 / British National Grid  
Scale: 1:7503 @ A3

